

## Contacts

Project co-ordinator

Anastasius Gavras  
Eurescom GmbH  
E-mail: [gavras@eurescom.de](mailto:gavras@eurescom.de)

Press enquiries

Milon Gupta  
Eurescom GmbH  
Phone: +49 6221 989121  
E-mail: [gupta@eurescom.de](mailto:gupta@eurescom.de)

## About Panlab

Panlab is a Specific Support Action of the European Union's 6th Framework programme, Thematic Priority 2 (Information Society Technologies). It was submitted to the fifth call of the programme and addresses the strategic objective "Research networking testbeds".

The project is partly funded by the European Commission.

Panlab is running from June 2006 to May 2008 and has an overall budget of about 1.3 million euro.

### **Panlab – Pan-European Laboratory for Next Generation Networks and Services**

Specific Support Action,  
FP6, IST Priority  
Project number: IST-034305  
Start date: 1. June 2006  
Duration: 24 months  
Website: [www.panlab.net](http://www.panlab.net)

# Pan-European Laboratory for Next Generation Networks and Services

## About EU Framework Programme 6

The EU Framework Programme 6 (FP6) has two main strategic objectives: strengthening the scientific and technological bases of industry and encouraging its international competitiveness while promoting research activities in support of other EU policies. FP6 is focused on a number of thematic priorities, including Information Society Technologies. EU FP6 website: <http://cordis.europa.eu/fp6>

Panlab receives research funding from the European Commission in the EU Framework Programme 6. Apart from this the European Commission has no responsibility for the content of this brochure. This brochure may contain forward-looking statements relating to advanced information and telecommunication technologies. Neither the Panlab project nor the European Commission accept any responsibility or liability for any use made of the information provided in this brochure.

### Consortium partners

Alcatel CIT (France)

Dimes - Digital Media Innovations (Finland)

Eurescom - European Institute for Research and Strategic Studies in Telecommunications GmbH (Germany)

Fraunhofer Gesellschaft zur Förderung der angewandten Forschung e.V. – Institute Fokus (Germany)

France Télécom R&D (France)

Italtel S.p.A. (Italy)

Nokia Corporation (Finland)

RAD Data Communications (Israel)

Telefónica I+D (Spain)

Thomson R&D (France)

École de technologie supérieure (University of Quebec) (Canada)

“Panlab will help to make advanced network services interoperable across Europe and, thus, share the risk and accelerate the time to market. We want to create synergies between the labs, in order to make European R&D more effective in bridging the gap between basic research and market-oriented development.”  
Anastasius Gavras, Panlab coordinator

## Concept of Pan-European Laboratory

The Pan-European laboratory is based on the concept of federation of distributed test laboratories and testbeds that are interconnected and provide access to required platforms, networks and services for broad interoperability testing. The coordination of resources and access to the laboratory services will be controlled by a centralised entity.

The Pan-European laboratory is a concept that is being introduced to enable the trial and evaluation of service concepts, technologies, system solutions and business models to the point where the risks associated with launching them as commercial products will be minimised. The accomplishment of this objective, which will assist many different European collaborative projects, is an important step towards the establishment of a truly pan-European collaboration network.

### Vision for a Pan-European Laboratory

Provision of facilities for end-to-end testing of:

- Services and content
- Software infrastructure
- Network infrastructure

Traceable interoperability between multiple interconnected platforms

Reliable and coherent end-to-end operation through a common structure

## Vision for long-term end-to-end testing

The long-term vision for the ICT industry and landscape imposes additional requirements for end-to-end testing. Due to the increasing complexity of systems and services, different testing approaches and models are required.

The Pan-European laboratory vision is to identify the long-term ICT industry requirements for end-to-end testing and to present a plan and roadmap for satisfying such requirements in the long-term.

The Pan-European laboratory is not a static organisation, but rather dynamic and adaptive; it will be extended, adjusted and improved by any new available platform, service and system that can be offered by the connected laboratories or new laboratories joining the federation. The entire mechanism, the rules and procedures of how to achieve the effective testing collaboration, will be developed in the Panlab project.

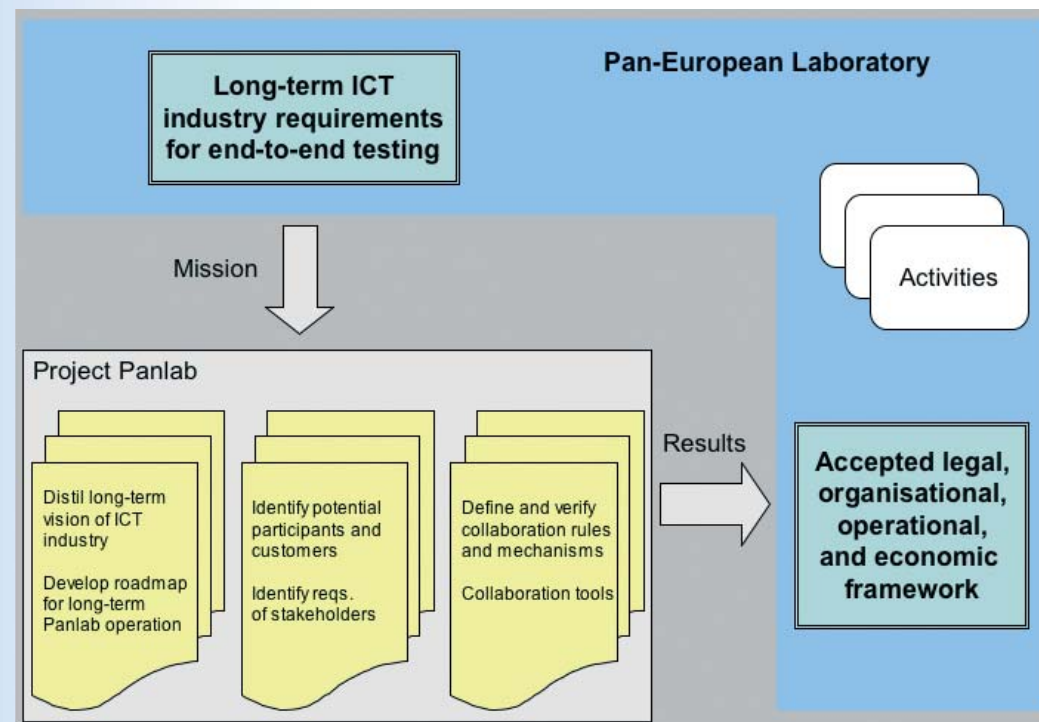


Figure 1: Overview of the Pan-European Laboratory

## Panlab project

Panlab is a Specific Support Action which enables and facilitates the establishment of the Pan-European laboratory for next generation networks and services. The objective of Panlab is to define a framework for the interconnection of independent testbeds and laboratories. The framework includes general legal and operational mechanisms as well as the approach for the technical infrastructure.

The project distils a “Common Technology Vision” for the ICT industry and landscape by assessing major international research programmes. It identifies the long-term milestones related to testing that need to be set on the ICT industry agenda and guidance on how to best reach them. This roadmap describes the long-term requirements for the operation of the Pan-European laboratory.

The indications and propositions of the common technology vision might also serve as a generic input for European collaborative projects regardless of the framework in which they are embedded. In particular it targets relevant projects in the European Framework programmes (e.g. FP6, FP7) as well as the Eureka cluster programmes, such as CELTIC ([www.celtic-initiative.org](http://www.celtic-initiative.org)). Although Panlab has a European focus, the project is open for international collaborations notably with North American and Asian organisations.

Panlab relies on the existing and future testing facilities, and will present enhanced collaboration mechanisms between these. The federative approach to distributed testing has the benefit of flexibility, but at the cost of the management of the distributed environment. The issues addressed by Panlab range from logistics, availability of qualified personnel, remote access and management of systems to the legal, economic and operational terms, which need to be clearly defined in order to allow for interconnection and efficient testing in competitive testing environments.

The results will enable the implementation of a physical infrastructure (interconnecting facilities, remote access and management capabilities, collaboration tools, etc.), aiming at establishing integration, testing, validation/verification, and possibly certification services for specific technologies and services as well as global solution prototypes developed by European collaborative projects.

The framework will be verified on a few example cases of advanced technologies and services, specifically roaming aspects of IMS, the Internet Protocol Multimedia Subsystem, and the mobile TV standard DVB-H. However, Panlab is not limited to specific technologies, but is flexible concerning the subject, scope, and scale of testing.

The ultimate goal of Panlab is the establishment of the grounds for a future operational and long-term self-sustainable Pan-European laboratory. This includes a business model on the continuation of Panlab as an independent entity, targeting customers, such as European or national collaborative projects and the industry, during its pre-competitive research and development phase.

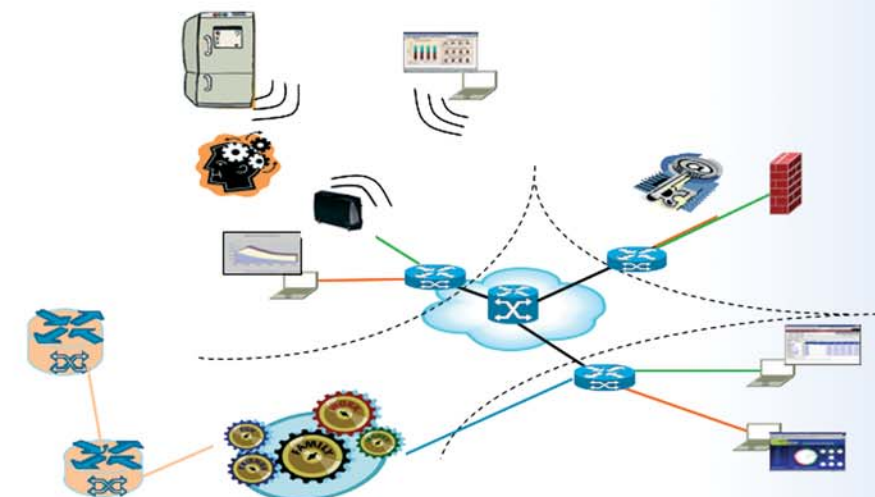


Figure 2: Panlab - federation of state-of-the-art laboratories and testbeds

**The Common Technology Vision** is a long-term technology roadmap and a strategic development guideline for testing activities in European and global telecommunications

**Stakeholders** are existing testing laboratories, testbeds, and collaborative projects in FP6, FP7, Eureka clusters and other international initiatives

**Accepted framework** of legal, economic, administrative and operational rules that enable collaboration of testing laboratories and testbeds

**The Panlab Community** are individuals and organisations, who are not members of the consortium, but operate testing laboratories and testbeds and would like to contribute to the work of the consortium within a controlled and moderated environment.

For information send an e-mail to [info@panlab.net](mailto:info@panlab.net)